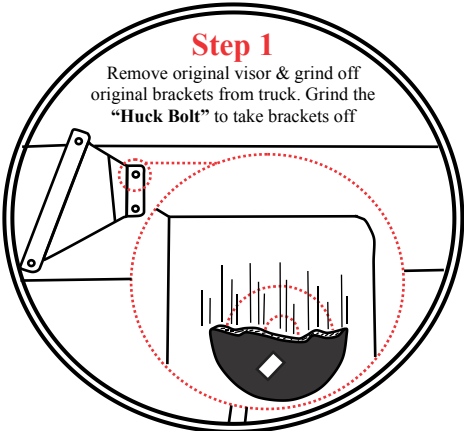


Pete -1000,1224,1225

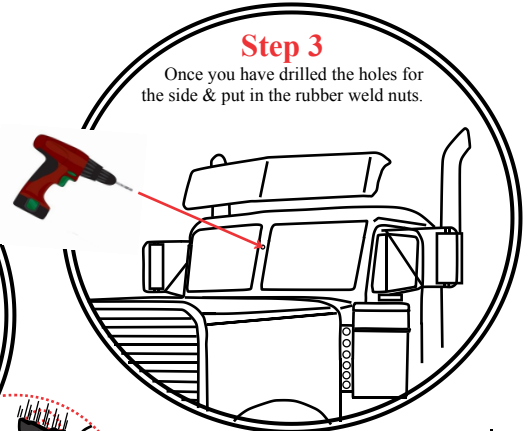
Step 1

Remove original visor & grind off original brackets from truck. Grind the "Huck Bolt" to take brackets off



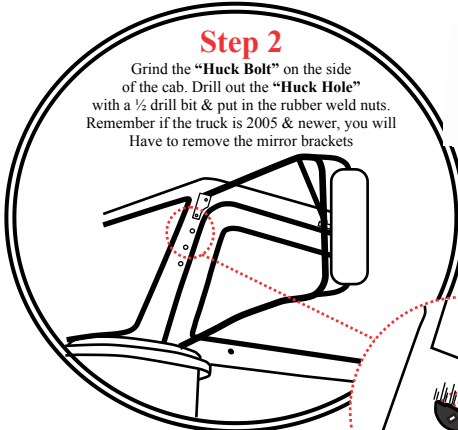
Step 3

Once you have drilled the holes for the side & put in the rubber weld nuts.



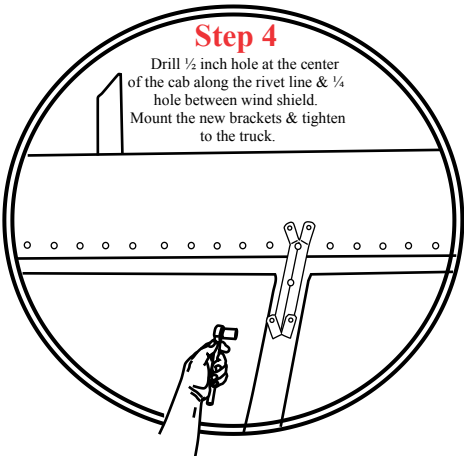
Step 2

Grind the "Huck Bolt" on the side of the cab. Drill out the "Huck Hole" with a 1/2 drill bit & put in the rubber weld nuts. Remember if the truck is 2005 & newer, you will have to remove the mirror brackets



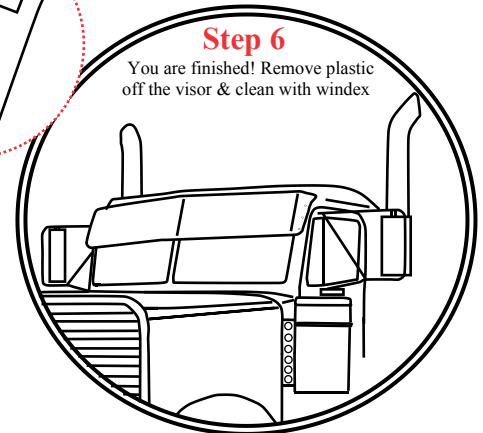
Step 4

Drill 1/2 inch hole at the center of the cab along the rivet line & 1/4 hole between wind shield. Mount the new brackets & tighten to the truck.



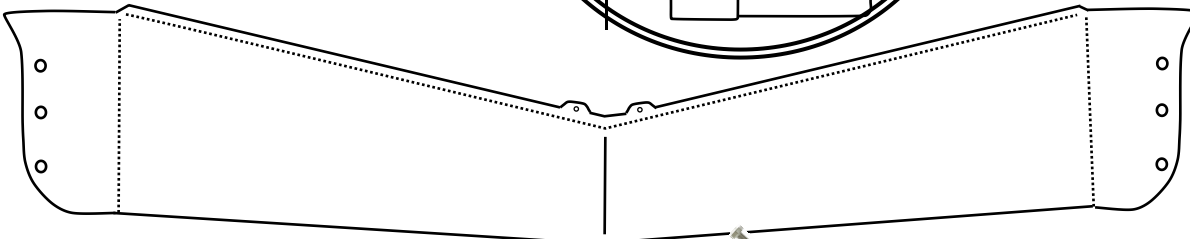
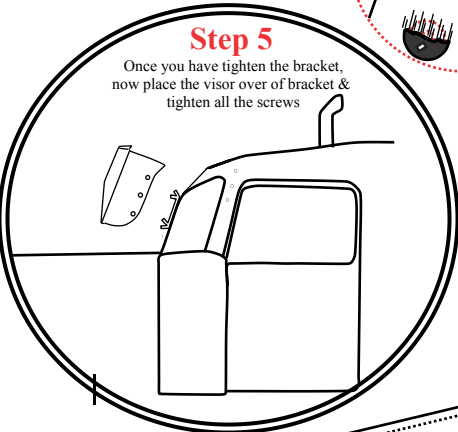
Step 6

You are finished! Remove plastic off the visor & clean with windex



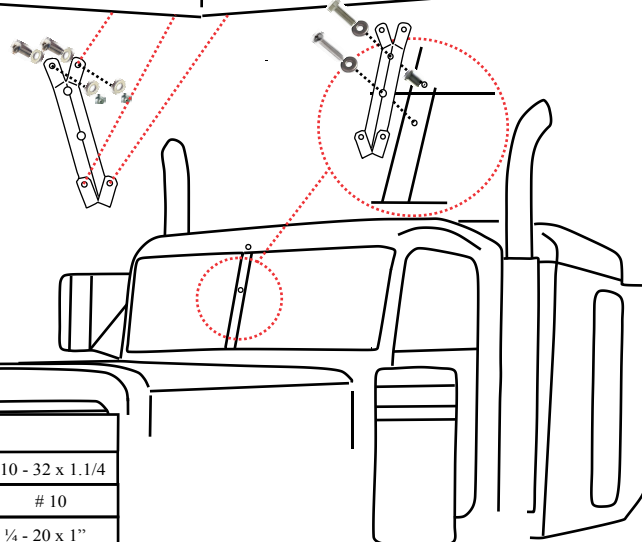
Step 5

Once you have tightened the bracket, now place the visor over of bracket & tighten all the screws



Notes

- Use silicone or something similar to patch any exposed holes once installation is completed.
- Drill cautiously to avoid puncturing the cabs interior.
- Insert screws "loosely" starting from outer edge to center. Then start "tightening" from center to outer edge.



Bolt Kit

	QTY: 1	Pan Phillips	10 - 32 x 1.1/4
	QTY: 2	Flat Washer	# 10
	QTY: 7	Weld Nut	1/4 - 20 x 1"
	QTY: 7	Hex Head	1/4 - 20 x 1 1/4
	QTY: 4	Nylon Hex Nuts	1/4 x 20
	QTY: 1	Nylon Hex Nuts	10 - 32
	QTY: 15	Flat Washer	1/4 x 5/8
	QTY: 4	Pan Phillips	1/4 - 20 x 3/4